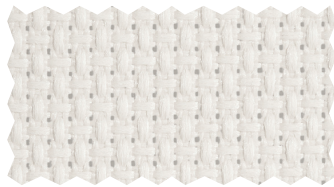
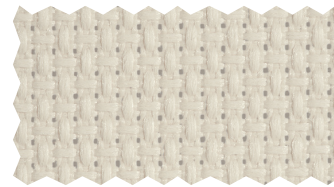




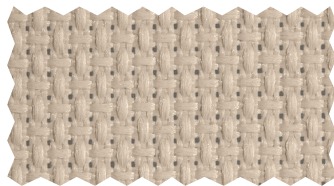
| FABRIC | | 683 |
|------------------------------|---|-----|
| TYPE | SHEER | |
| AVAILABLE WIDTH (IN) | 110 | |
| COMPOSITION | 100% POLYESTER | |
| OPENNESS FACTOR | 3% | |
| UV BLOCKAGE | 97% | |
| WEIGHT (OZ/YD ²) | 7.3 | |
| THICKNESS (IN) | 0.016 | |
| FIRE CLASSIFICATIONS | CALIFORNIA U.S. TITLE 19 (SMALL SCALE); NFPA701:2010 METHOD 1 | |



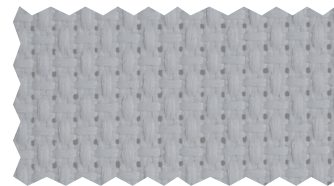
-10 White



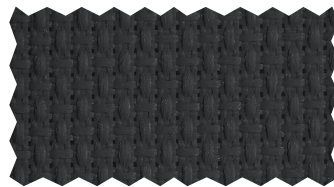
-22 Fawn



-05 Sand



-80 Grey



-90 Black

All colors are illustrative only. Accurate color representation in print is not guaranteed. For actual colors, we recommend that a physical sample be ordered.