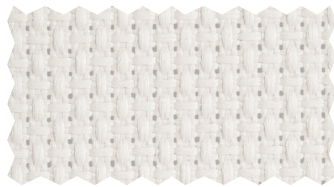
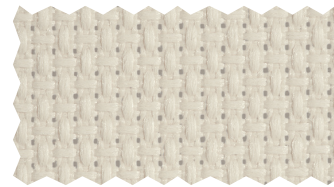




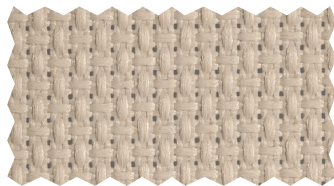
FABRIC		683
TYPE	SHEER	
AVAILABLE WIDTH (IN)	110	
COMPOSITION	100% POLYESTER	
OPENNESS FACTOR	3%	
UV BLOCKAGE	97%	
WEIGHT (OZ/YD <sup>2</sup> )	7.3	
THICKNESS (IN)	0.016	
FIRE CLASSIFICATIONS	CALIFORNIA U.S. TITLE 19 (SMALL SCALE); NFPA701:2010 METHOD 1	



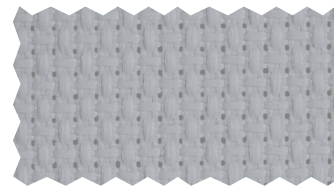
-10 White



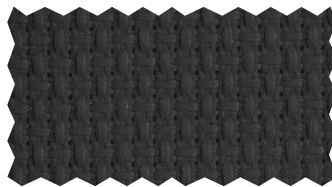
-22 Fawn



-05 Sand



-80 Grey



-90 Black

All colors are illustrative only. Accurate color representation in print is not guaranteed. For actual colors, we recommend that a physical sample be ordered.